



Levenmouth Reconnected Programme Funding strategy

Contents

1. Introduction and background	3
2. Focus and principles	3
3. Levenmouth Reconnected Programme themes and outcomes	4
Opportunities for all	4
Inclusive jobs and growth	4
Thriving places	4
Community led services	4
4. Eligible areas for the Levenmouth Reconnected Programme	5
5. Further points to consider	6
6. Grant threshold levels available	7
Small Grants Scheme	7
Large Grants Scheme	7
7. The application process	7
8. Monitoring and claims	7

1. Introduction and background

On 8 August 2019, the Cabinet Secretary for Transport, Infrastructure and Connectivity announced the commitment of the Scottish Government to re-open the Leven rail link at an estimated cost of £70 million. In addition, he announced the commitment to a grant offer of up to £5 million which was accepted, and match funded of up to £5 million by Fife Council.

The Levenmouth Reconnected Programme, formerly known as the Levenmouth Reconnected Blueprint, is a fund of up to £10 million focussed on stimulating growth and economic prosperity in support of the transport improvements over the longer term to rail, active travel connectivity and bus integration.

The £10 million fund can be used for capital and/or revenue purposes (revenue is subject to budget being available through a Capital Funded swap). If a project with revenue expenditure extends beyond the lifetime of the programme or the availability of funds from the programme, then an alternative source of ongoing funding is to be secured. It is expected that all disbursements made will be supported by a proportionate business case, and that any expenditure aspires to leverage match funding.

The programme is to secure a viable and sustainable legacy for the wider Levenmouth area, which will follow a governance and reporting structure for business-as-usual activity beyond 2026.

2. Focus and principles

The overarching objectives of the Levenmouth Reconnected Programme fund will seek to maximise the economic and social opportunities presented by the new railway for our people, communities, businesses and visitors, now and in the future. The new railway investment will help to deliver sustainable and inclusive growth through:

- The creation of new employment, skills and learning opportunities.
- Strengthening our inward investment potential and access to wider markets.
- Improve accessibility to and from Levenmouth towns and communities, thus improving access to key services for all.
- Providing improved connectivity as part of wider integration transport ambitions.

3. Levenmouth Reconnected Programme themes and outcomes

Opportunities for all

- Improve health outcomes.
- Family learning and adult learning opportunities.
- Improved local services for the young, old and vulnerable people in our community.
- Targeted anti-poverty interventions.

Inclusive jobs and growth

- Increased local opportunities for skill development and training.
- Tourism and leisure employment opportunities.
- Ensuring a local dividend from the energy park development, and other large-scale local projects.

Thriving places

- Improvements in transport connectivity (walking, cycling, bus and rail).
- Targeted action on anti-social behaviour issues.
- Town centre public realm improvements.
- Maximise the quality of the built and natural environment.
- Adapt to the effects of climate change whilst helping to deliver our net zero target.

Community led services

- Develop and support community leadership in all forms.
- Increased volunteering opportunities.
- Increased use of participatory budget approaches.
- Promote and support community asset transfer where possible.

4. Eligible areas for the Levenmouth Reconnected Programme

Are defined to be within the Levenmouth Council Wards 21 and 22 as illustrated in Figures 1.1 and 1.2 below, respectively.

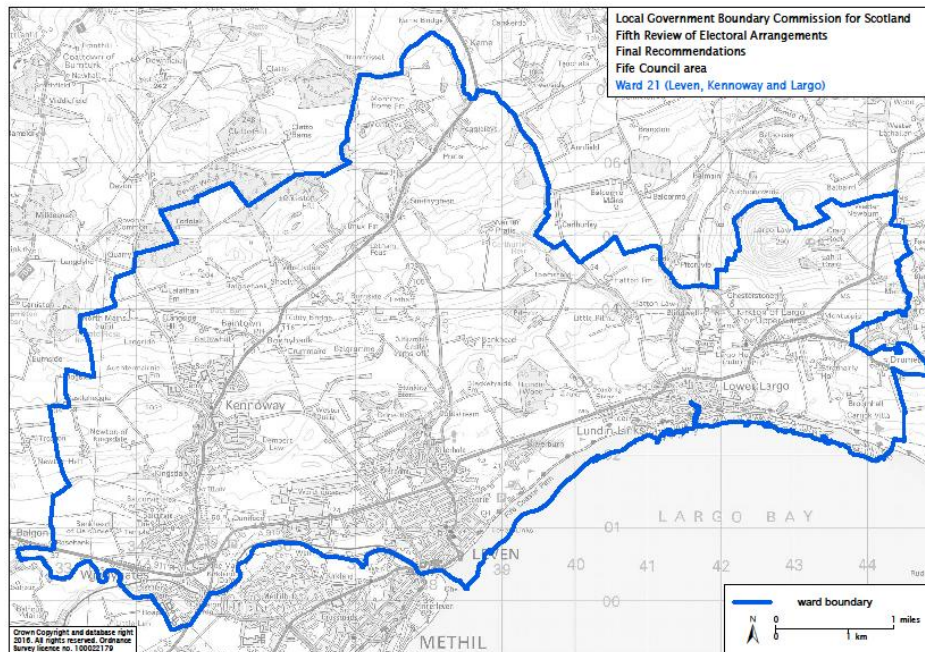


Figure 1.1: Levenmouth Council Ward 21

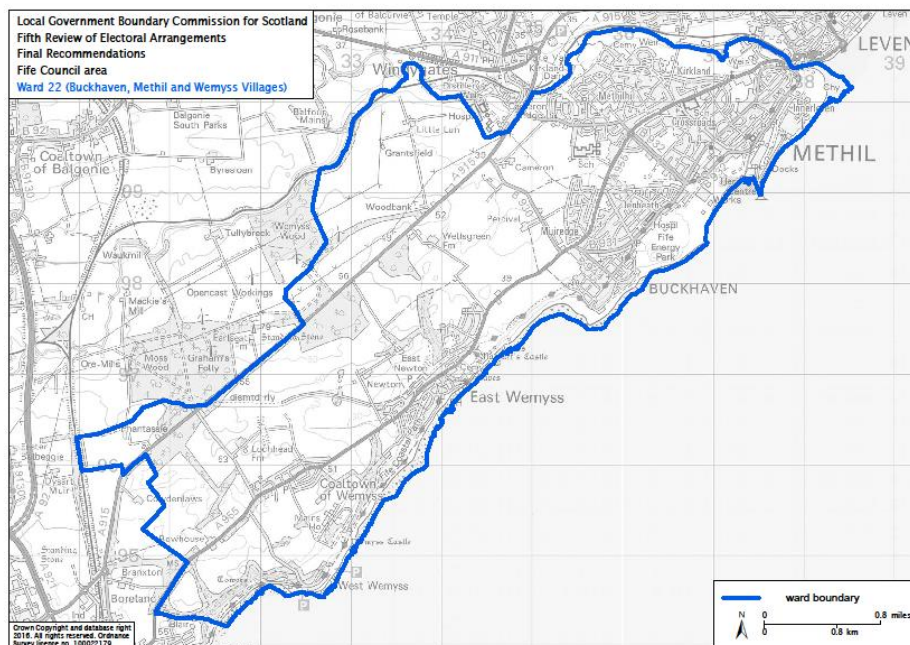


Figure 1.2: Levenmouth Council Ward 22

5. Further points to consider

Applications for funding towards play parks, skate parks and MUGAs will only be considered in instances where the long-term maintenance of the facilities are guaranteed thereby protecting the spend of monies from the programme. It should be noted that a commitment to inspections and routine maintenance works only will not suffice and to secure funding a signed robust maintenance plan will be required as part of the supporting documentation.

- The programme's main aim is to support projects where they align with the programme's themes and objectives as set out in LRP vision and objectives document (LRP-GA011).
- New build projects are eligible for consideration, however the need for a new build must be considered in the context of the existing buildings available in the community for public use.
- The programme recognises that it should be providing additional, not displacement, funding and all proposals should demonstrate the need for funding support by indicating how alternative sources have been investigated.
- Applicants of phased projects will normally need to re-apply each year. Funding in one phase does not guarantee funding in subsequent years. Further, applicants applying for second phase funding would need to ensure that the first phase of the project has been completed to the programme's satisfaction.
- There must be a clear commitment to the maintenance of projects upon completion of the works.
- The programme reserves the right to fund only those elements of a project that conform to the programme's criteria as indicated.
- Projects of a larger scale, or part of a longer-term development may be required to provide supplementary evidence such as a business case and/or business plan or masterplan document.
- In reference to the Small Grants Scheme, please note that applications for funding will not normally be considered in circumstances where the applicant's audited accounts show unrestricted funds of more than £15,000 in the most recent financial year.
- Revenue projects are eligible, however will ordinarily be supported for a maximum of two years or conclusion of the programme, whichever comes first. The programme is expected to run until March 2026.

- Applications from businesses are eligible, but the application will have to demonstrate community benefit (e.g. local employment, using local supply chain etc) or have a collaborative working approach and may be subject to a limited amount of funding.

6. Grant threshold levels available

The Levenmouth Reconnected Programme currently offers two levels of funding support to eligible organisations and projects.

Small Grants Scheme

Applicants can apply for a maximum of **90%** of total eligible project costs of no more than £5,000 (exclusive of VAT). **Applications are also welcome for £5,000 requests towards the cost of large eligible projects.** The Small Grants Scheme operates on a rolling basis and applications can be submitted to the programme at any time. There will be an initial £100,000 allocation for the small grant scheme, this will be available for the duration of the programme or until fully allocated, whichever comes first. In kind contribution may be considered for match against **small applications only**. This will be viewed on a case-by-case basis and should not be seen as a guarantee that this will be accepted. Applicants are expected to identify alternatives funding sources in the event in kind contribution is not accepted.

Large Grants Scheme

Presently there is no limit to the amount of funding an applicant can apply for however, LRP will only fund projects to a maximum of **75%** of total eligible project costs. This can be reviewed by the working group and may be increased or decreased through the programme. Should a project apply for **75%** of the project costs, the working group assessment panel can decide to lower the intervention rate if they do not feel the project meets the themes, priorities or objectives of the fund. The Large Grants Scheme operates on biannual (twice a year) basis and applications should be submitted to meet the deadline(s), once published.

7. The application process

Refer to the process diagram and FAQs (LRP-GA001). Fife Council reserves the right to change the process and how applications are assessed at any time if they feel it is reasonable to do so.

8. Monitoring and claims

All approved projects will be required to complete a quarterly monitoring submission until completion of the project. You will be asked for a quarterly monitoring update

even if your project has not yet progressed to a site start. This is because we require an update on the progress being made moving towards a physical site start.

Additionally, applicants are required to provide the direct and indirect benefits (jobs, better connectivity, access to services etc) realised at the end of years one, three and five post project completion. This will demonstrate the success of the benefits outlined within the application as well as any additional benefits either not noted or anticipated.

All claims must be submitted on an authorised claims form, which will be forwarded to you on request along with associated guidance. Payments will only be made against invoices for goods or services received or valuation certificates for building works, certified by a qualified person such as a chartered architect or surveyor.

Payments will be paid as a percentage of the costs within a project as agreed i.e. if there is a 50% grant awarded, then up to 50% of the value of invoices for costs submitted at any one time shall be paid. LRP will **not** contribute to costs that fall outside approved purposes unless authorised by LRP (in writing) before works commence. LRP will **not** contribute to costs incurred prior to the formal offer release and acceptance by your organisation.